

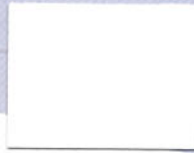
6000 Series Epoxy Polyester Hybrids



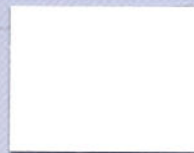
6920-9031
Arctic White



6323-9037
White Peel



6920-91067
Universal White



6820-9189
Cabinet White



6232-9044
White Tex



6820-1065
Antique White



6720-90335
Oyster White



6720-9262
Cabinet Beige



6820-1060
Almond



6132-1056
Almond Tex



6920-1229
Piedmont Almond



6720-1062
Champagne



6550-71817
Lowes Gray 300 II



6820-7059
Circuit Grey



6620-7530
RAL 7040 Grey



6720-7050
Mercury Grey



6132-7047
Fog Grey



6820-1147
Brite Yellow



6820-2004
RAL 2004



6820-3063
Fire Red



6820-3044
Winchester Red



6820-5061
Cobalt Blue



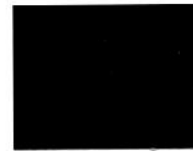
6032-9000
Black Tex



6210-9866
Northstar Black

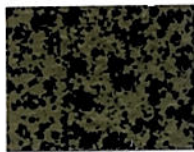


6420-9540
45 Black

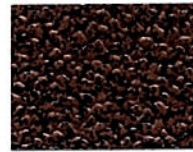


6920-9000
Channel Black

7000 Series Epoxies



7334-0050
Gold Vein



7334-0060
Copper Vein



7334-0065
Silver Vein



7010-9236
JA6AXXJ Flat Black



7010-9000
Flat Black



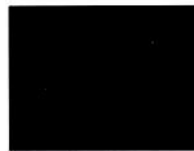
7027-91831
Black Wrinkle Epoxy



7110-9000
10 Black



7210-9000
Trans Black



7420-90147
40 Black Epoxy



7830-9000
Auto Chassis Black

8000 Series Urethanes



8810-9074
Furniture White



8400-9053
Satin White



8810-7097
Tropic Grey



8300-7087
61 Grey



8810-10577
Goldenrod



8910-3067
Blood Red



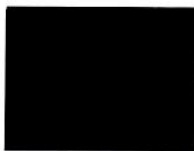
8000-9000
Dash Black



8017-91612
DF Black Wrinkle III



8200-9000
Satin Black



8510-9000
Universal Black



8702-9000
JASAXXG



8910-9000
Gloss Black

9000 Series TGIC Polyesters

9910-9035 Crystal White	9910-9897 Sky White II	9910-9741 Brite White	9610-9021 Pompano White	9313-9062 Poly White Peel	9910-1045 Pasta
9820-12266 Miracle Almond	9810-1048 Sandlewood	9810-1049 Mesa Tan	9810-7042 Elec. Grey/ASA 70	9510-70039 Super Grey 61	9610-7040 Storm Grey
9530-70200 HPC 61 Gray	9900-7111 Win Grey	9820-7146 Accuride Grey	9810-1070 Golden Yellow	9810-1268 Safety Yellow	9810-2113 Sonny Orange II
9840-2461R Safety Orange	9910-2352 October Orange	9810-3042 Ruby Red	9840-30200R Safety Red	9910-3921 Chili Pepper	9810-6046 Ivy Green
9910-5067 Azure Blue	9810-5413 Bahama Blue Poly	9910-5054 Ocean Blue	9910-8036 Dark Sienna	9611-01069 SD Statuary Bronze	9002-9324 JA6A Tex Polyester
9030-90922 SD Flat Black	9243-91713 LC Poly Black Peel	9350-91411 FC Matte Black	9510-91039 SD Mineral Black	9012-9000 Tex Black	9042-90137 LC Black Tex
9310-90160-G SD Black Polyester	9310-90278 Satin Black Polyester	9313-9000 Poly Black Peel	9330-90775 LC Poly Satin Black	9620-90786 N Black	9510-92337 Echo Black
9510-91410 Lava Black	9710-9000 Cargo Black	9740-90637 Super Slip Black II	9910-9845 SD Accuride Black II	9910-9000 Shuttle Black	9910-9845HF HF SD Accuride Black II

Clears

8910-0231 Anti-Graffiti 90 Clear	9310-01308 SD 40 Clear	9910-0000 90 Clear
9030-01311 SD 10 Clear	9710-01307 SD 70 Clear	9910-01289 SD 90 Clear

Fast Cures

9950-9897 FC Sky White II	6950-9000 FC Channel Black	9950-9000 FC Shuttle Black
9540-91709 FC Lava Black II	9550-9000 FC SD Lava Black	9950-90708 FC SD Accuride Black II

Tru Colors

Illusions



9911-01869R
Truillusion Silver



9911-01865R
Truillusion Red



9911-01867R
Truillusion Green



9911-01866R
Truillusion Blue

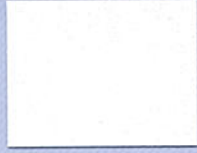


9911-01864R
Truillusion Purple



9911-01871R
Truillusion Black

Wrinkles



8027-92261
Fog White Wrinkle



8027-72763
Flint Grey Wrinkle



8027-30403
Sunset Red Wrinkle



8027-51311
Surf Blue Wrinkle

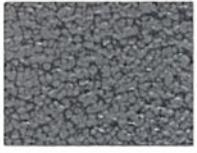


8027-81460
Coffee Brown Wrinkle

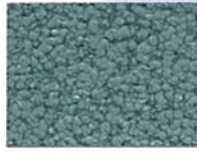


8027-92251
CA Black Wrinkle

Hammers



9215-01910
Silver Rock Hammer



9315-61636
Mist Green Hammer



9215-51313
Storm Blue Hammer



9315-01811
Brown Hammer



9315-92132
Dark Pewter Hammer

Peels



9413-92222
Dixie Black Peel II

Erase



8800-92213
Crystal Eraser White

Primers



7030-10571-1
Beige Primer II



7010-71529
Sam Primer Gray



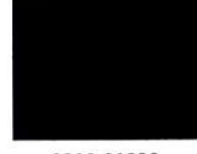
7520-70138
Zinc Rich Primer



8510-7833
HH Grey Primer



7760-3931
LC Red Oxide Primer



8210-91232
HH Black Primer

Ag & Construction



9920-12085
CNH Power Tan*



9920-72188
CNH CE Gray*



9910-10503
SD Cat Yellow



9840-60728
FC SD JD AG Green



9920-51087
CNH NH Blue*



9920-72190
CNH Dark Gray*



9420-91835
CNH Black*



9350-91614
FC SD JD Black



9210-90663
SD Cat Black

*Has formal approval

AAMA

10310-91095
AAMA 2604 Bone White

*For a full selection of TCI's architectural powder coatings, please see our TruDurance™ Architectural Color Card.

Federal Standards



7820-71737
Epoxy Primer Mil
Spec 53022



8010-10828
Fed Std 33446



8010-60063
Fed Std 34094 Green



8010-91335
Fed Std 37038

Metallics



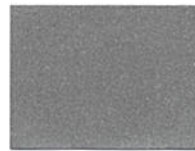
9811-0110
Wheel Silver



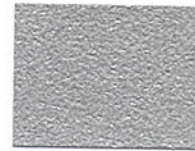
9911-01007
Chrome II



9911-01304
Mirror Silvadillo



9611-01333
Stainless Steel 2.5



8212-01185
Stainless Steel Tex III



9711-0259
Bright Argent Metallic



8112-0889
Kessler Silver



9811-0540
Stardust Silver II



9511-01405
Anodized Aluminum



9511-01413
New Alpine Silver



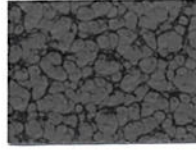
9114-01411
Poly Gold Vein



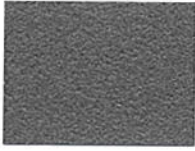
9114-0346
Poly Silver Vein



9114-0608
Weatherveine



9415-71531
Sam Grey Hammer



9012-0050
Silver Tex



9211-01410
SD Oil Rubbed Bronze



9016-80072M
Pompeian Gold II



9411-01409
Quaker-40 Bronze



9811-01408
SD Starlight Black



9411-01414
Satin Nickel



9911-01406
Black Chrome



9711-01407
SD Harvest Gold



9921-01023
SD Coppertop



10511-0997
AAMA 2604 Bronze

Product Formulation

First Number = Resin Type

9801-1000 (example)

- | | |
|----------------------|----------------|
| 1 = Low Cure | 7 = Epoxy |
| 2 = Acrylic | 8 = Urethane |
| 3 = High Temperature | 9 = TGIC |
| 4 = Specialty | 10 = AAMA 2604 |
| 5 = Alt. Cure | 11 = AAMA 2605 |
| 6 = Hybrids | |

Second Number = 60° Gloss Reading

9801-1000 (example)

- | | |
|-----------|-----------|
| 0 = 0-9 | 5 = 50-59 |
| 1 = 10-19 | 6 = 60-69 |
| 2 = 20-29 | 7 = 70-79 |
| 3 = 30-39 | 8 = 80-89 |
| 4 = 40-49 | 9 = 90+ |

Third Number = Cure Response

9801-1000 (example) Time at metal temp for full cure

- | | |
|----------------------|-------------------------|
| 0 = 12 min. @ 400° F | 5 = 10 min. @ 300° F |
| 1 = 10 min. @ 400° F | 6 = 10 min. @ 275° F |
| 2 = 10 min. @ 375° F | 7 = 10 min. @ 250° F |
| 3 = 10 min. @ 350° F | 8 = Fast Cure - See TDS |
| 4 = 10 min. @ 325° F | for recommended cure |

Fourth Number = Surface Appearance

9801-1000 (example)

- | | |
|-----------------|-----------------|
| 0 = Smooth | 4 = Vein |
| 1 = Metallic | 5 = Hammertone |
| 2 = Sand | 6 = Multi-Color |
| 3 = Orange Peel | 7 = Wrinkle |

Last Series Corresponds to RAL Color System

9801-1000 (example)

- | | |
|---------------------------|------------------------|
| 0000 = Clears & Metallics | 5000 = Blues |
| 1000 = Yellows & Beiges | 6000 = Greens |
| 2000 = Oranges | 7000 = Grays |
| 3000 = Reds | 8000 = Browns |
| 4000 = Violets | 9000 = Blacks & Whites |

Product Coding Notes for Metallics

10801/1000 = 10000 Series Metallic
*CLEARCOAT Required

108010/1000 = 10000 Series Metallic
* NO CLEARCOAT Required